

THE PLATFORM GRADUATE AWARD: Alumni Residency Opportunity

aspex
portsmouth

LOCATION: Aspex Portsmouth (*The Vulcan Building, Gunwharf Quays, Portsmouth, PO1 3BF*)

TIME PERIOD: Thursday 12 October – Saturday 23 December 2023



Artist and alumni of the *Platform Graduate Award*, Sasha Damjanovic with Curator Vickie Fear in Aspex's Artist's Studio (2022)

Aspex Portsmouth, the city's leading contemporary art space, is inviting artists to apply for the Platform Graduate Award Alumni Residency.

The Artist's Studio will be available for use by the selected artist for three months, free of charge. The selected artist will be given a cash bursary of £500 towards costs such as travel and materials, and must be willing to engage with Aspex's visitors and commit to using the studio for a minimum of two days per week during the gallery opening hours (Wednesday – Sunday). Please see the Terms & Conditions below for full details.

Previous residents: Sasha Damjanovic (2022), Megan Georgia Smith (2021), Jasmine O'Hare (2019), Julia Keenan (2019), Svetlana Ochkevskaya (2017/2018) and Charlotte Bradley (2016).

This opportunity is only open to alumni of the *Platform Graduate Award* – artists who have participated in the group exhibitions held at Aspex Portsmouth, De La Warr Pavilion, MK Gallery, Modern Art Oxford, Turner Contemporary and Phoenix Art Space, since the programme was established in 2012.

How to apply

To apply for this opportunity, please complete the application form [here](#)

For any questions, please contact Aspex's Curator/Programme Manager, Ricardo Reverón Blanco (ricardo@aspex.org.uk) with the subject 'Platform Alumni Residency'

The closing date for applications is Monday 2 October 2023, 12am.

TERMS & CONDITIONS

1. The selected artist will have access to the studio space five days a week (Wednesday – Sunday) between the hours of 11am–4pm. Additional days can be discussed with the Curator/Programme Manager.
 2. The offer is for a studio space free of charge and a bursary towards artist's costs.
 3. All activities undertaken within the Artist's Studio must adhere to Aspex's Health & Safety Policy.
 4. The selected artist will be expected to complete a contract upon the residency start date.
-

ABOUT ASPEX

Aspex has a 40 year track record of supporting emerging artists and engaging audiences, through the delivery of a programme of exhibitions, off-site projects and participatory opportunities. Artists such as Mona Hatoum, Richard Wilson and Susan Collis, all internationally acclaimed, received support from Aspex at an early point in their careers.

This work has continued with projects including Emergency, an open submission biennial exhibition, offering key opportunities for artist exposure and professional development for artists since its development in 2002.

Since relocating to the waterfront at Gunwharf Quays in Portsmouth in 2006, the gallery has focused on finding ways to meaningfully engage its visitors by facilitating connections with artists and revealing the creative process.

The participation programme provides activities for toddlers through to pensioners, and its work with children with Special Educational Needs and Autism has been described as exemplary.

www.aspex.org.uk

ABOUT CVAN SOUTH EAST

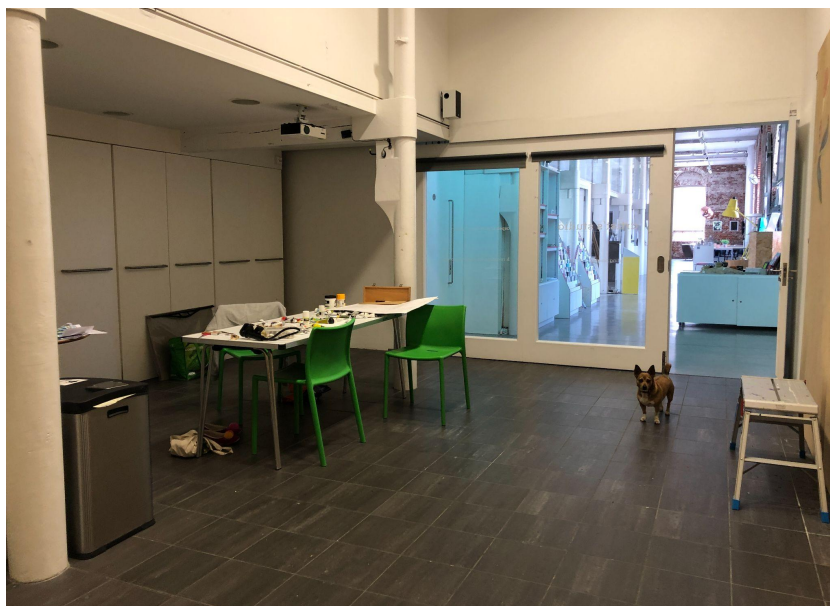
CVAN South East (Contemporary Visual Arts Network South East) is a regional network of visual arts organisations that work collaboratively and with the wider South East visual arts sector to collectively deliver a strong visual arts offer for artists and audiences alike, developing partnerships, research projects, artists' commissions and professional development.

A major element of its programme is the *Platform Graduate Award* that it has managed since 2012. The network is supported by Arts Council England.

www.cvan.org.uk/south-east

PLATFORM

C **V** South East
A **N** Contemporary
Visual Arts Network





Images show work in progress by Hannah Horn in the Artist's Studio, 2022