



We look forward to welcoming you to Aspex Portsmouth

We have created a visual story to help you prepare for your visit.

About Aspex Portsmouth



Aspex Portsmouth is located in the Vulcan building in Gunwharf Quays, Portsmouth.

It is an art gallery and community space. Inside you can see art from artists around the world and take part in workshops and activities.

Before you visit

Aspex Portsmouth is open Wednesday to Sunday.

You can visit us from 11:00 - 16:00.

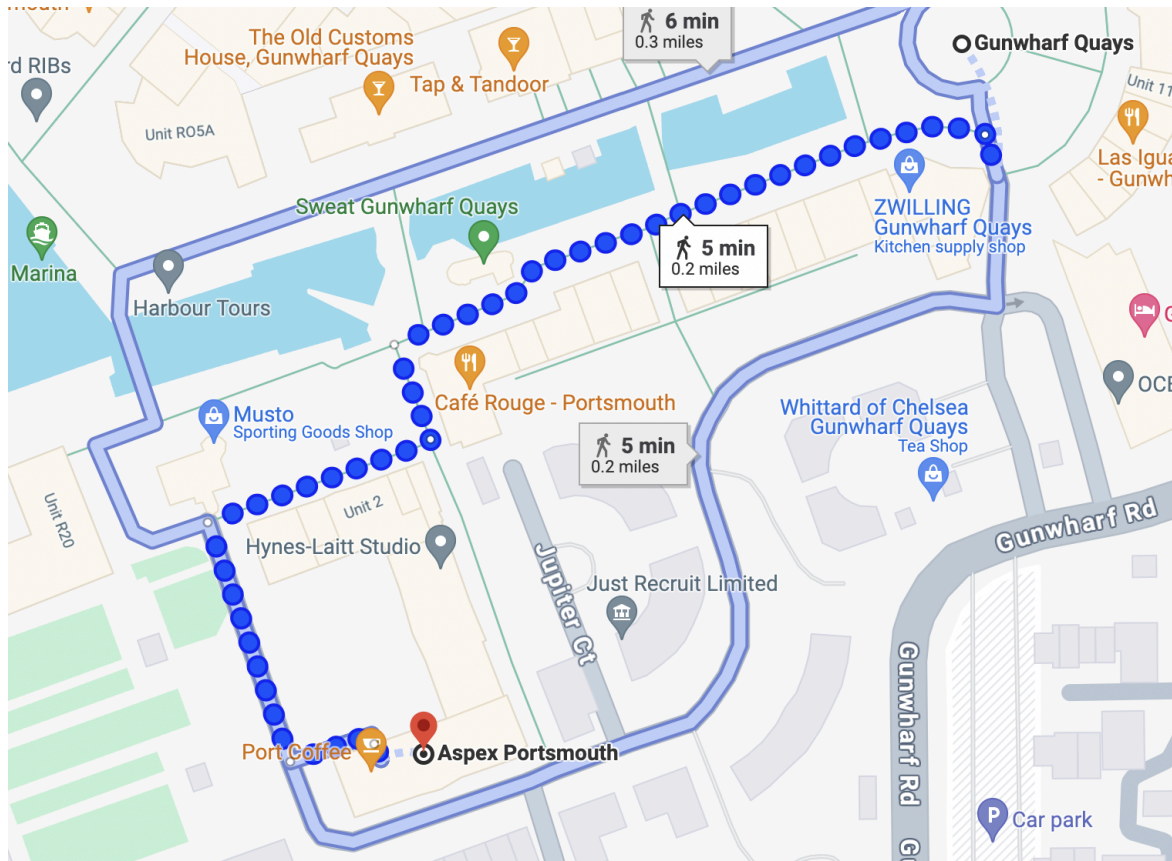
It is quietest at the start of the day on Wednesday, Thursday and Sunday, and at the end of the day on Thursday, Friday, Saturday and Sunday. Our busiest times are Wednesday 13:00 - 16:00, Friday 11:00 - 13:00 and Saturday 11:00 - 13:00. You can call us on +44 (0)23 9277 8080 to find out how busy we are.

Admission is free. There's no need to book before you visit.

You may want to bring a face mask. Wearing a face mask is optional. You can wear one if this makes you feel more comfortable.

There are hand sanitisers for you to use in the gallery. You can bring your own if you prefer.

Finding Aspex Portsmouth



There is one main entrance to Aspex Portsmouth. You will find the entrance at the Vulcan Building behind the old Loch Fyne Restaurant.

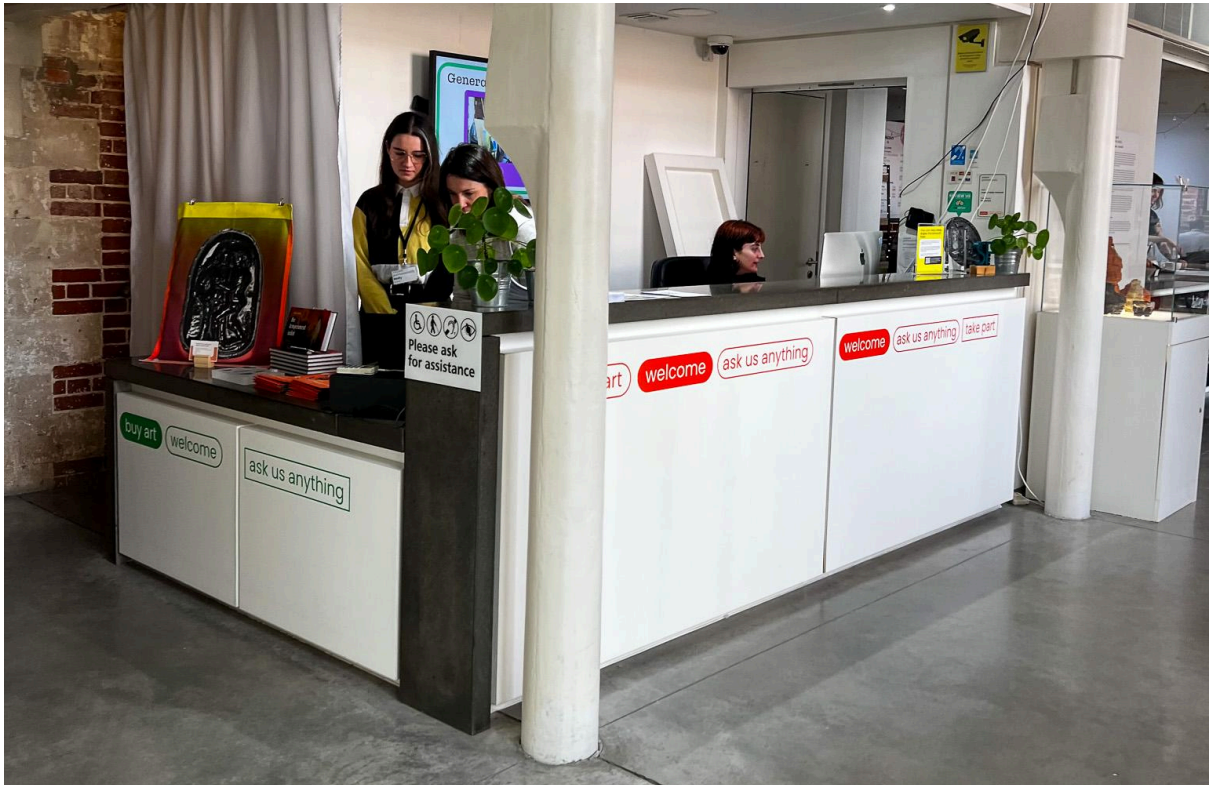
Aspex Portsmouth is a five minute walk from the Vernon Gate Entrance and Main Plaza in Gunwharf Quays, where you will find Costa Coffee and Las Iguanas. You can reach the building by walking along the row of retail shops leading towards the waterfront. Once you reach Cafe Rouge, you will take a left turn past the side of the restaurant and through to the residential area. You will walk through an underpass which will lead you to the Vulcan Building. You can also find the entrance by

walking past Musto and walking down the pathway to the residential area and across the car park.



On your arrival, you will see an arched glass door with the words 'aspex portsmouth' and 'art, artists, community'. This is the main entrance.

When you arrive



As you enter the building, you will see a reception area with a member of staff seated behind the desk. They will be wearing a lanyard with the Aspex Portsmouth logo and their name on.



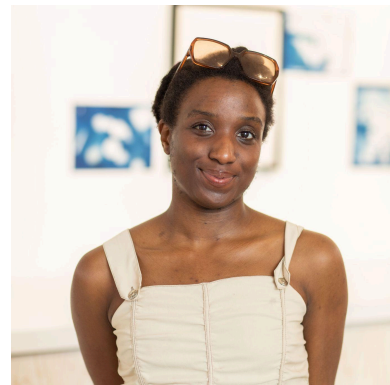
People on your visit



Joanne



Sam



Michelle



Isis



Lynsey



Ricardo



Lucy



Maya



Kirstie

This is what some of the staff look like. If you have a question when you are at Aspex or if you need help, the people wearing a lanyard can help you. It is fine to talk to them.



As you enter, you will also see a soft seating area opposite the reception desk. You can sit here if you would like to. This is a good place to go if you need somewhere quiet or relaxing in the building.

There is a sensory box to the side of the seating, where you can find an assortment of stimulating and playful toys and materials.

Getting around Aspex



Everything at Aspex Portsmouth is on the ground level and has step-free access.

There are five main areas in the building - the main gallery, the artist studio, the learning space, the shop and the cafe.

The Main Gallery



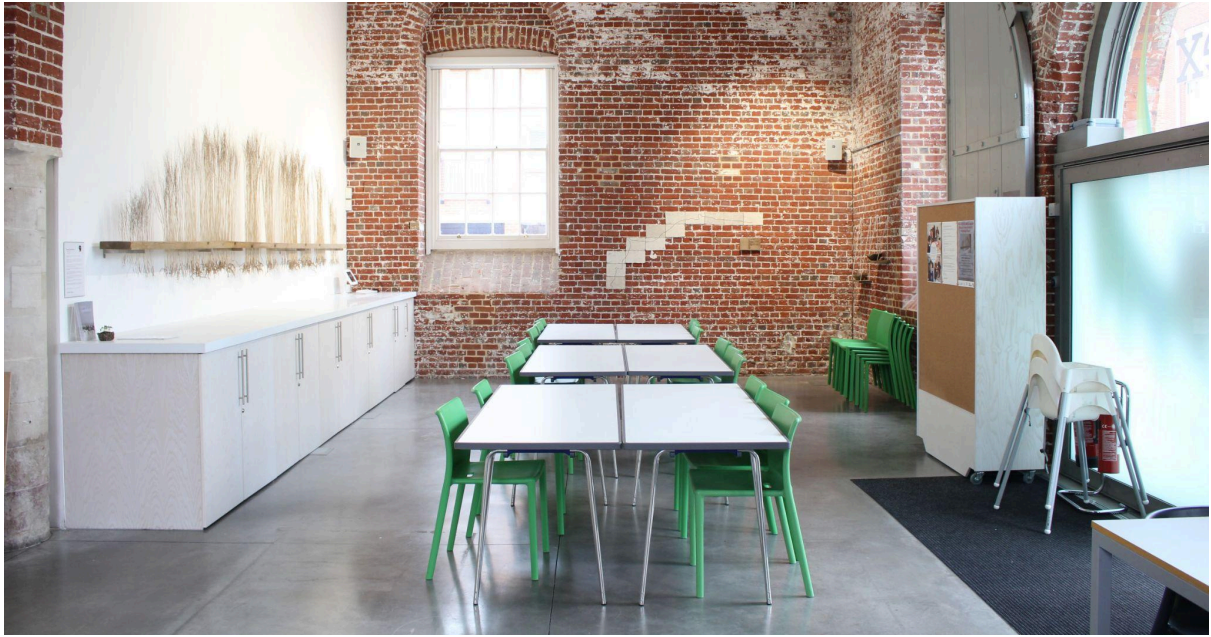
There is a main gallery. This is a large open space where you will see different types of art.

We change the artwork in the gallery around when we make new exhibitions. This means some rooms may look slightly different when you visit.

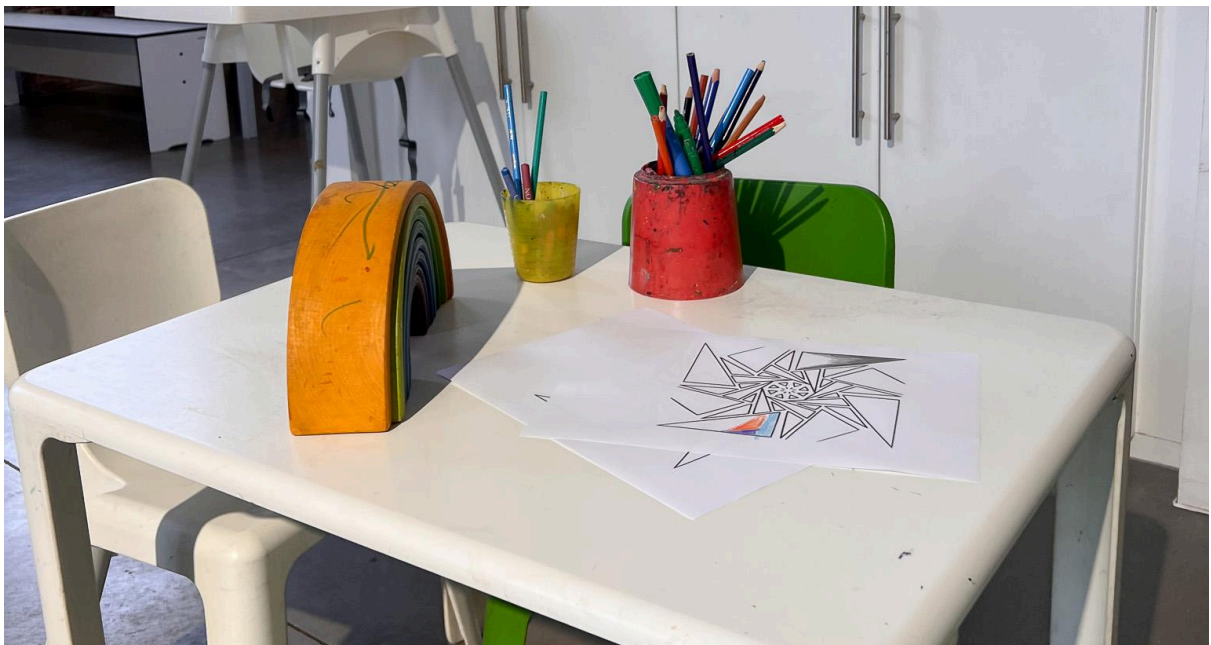
There might be text on the walls to help explain the art. If the text is too small for you, large print guides for exhibitions can be collected at the exhibition entrances.

Look out for markings on the floor or wire barriers around some artworks. This is so you do not get too close to the art.

The Learning Space



There is a learning space. This is where we sometimes have activities and workshops. There is also artwork on display on the wall above the cupboards.



There is a small table for children with colouring pencils and paper. You can sit here and colour in or draw if you would like.

The Artist Studio



There is an artist studio. Sometimes there will be an artist in this space. We call them an artist-in-residence. When there is artwork on display, you can walk through and take a look.

Toilets



There are two toilets in the building which are both gender neutral. There is a disabled toilet in between the shop area and before the entrance to the artist studio. You will see this sign on the door. If the lock is red, it is engaged.



There is a toilet next to the cafe counter and before the Learning Space. It is a small space. You will see this sign on the door. If the lock is red, it is engaged.

Visiting the Cafe



The cafe is called Port Coffee. You can buy food and drink from here. There are a selection of hot and cold drinks, sandwiches, salads and cakes.

You can order at the counter. The person behind the counter will take your order and will bring it over to you.



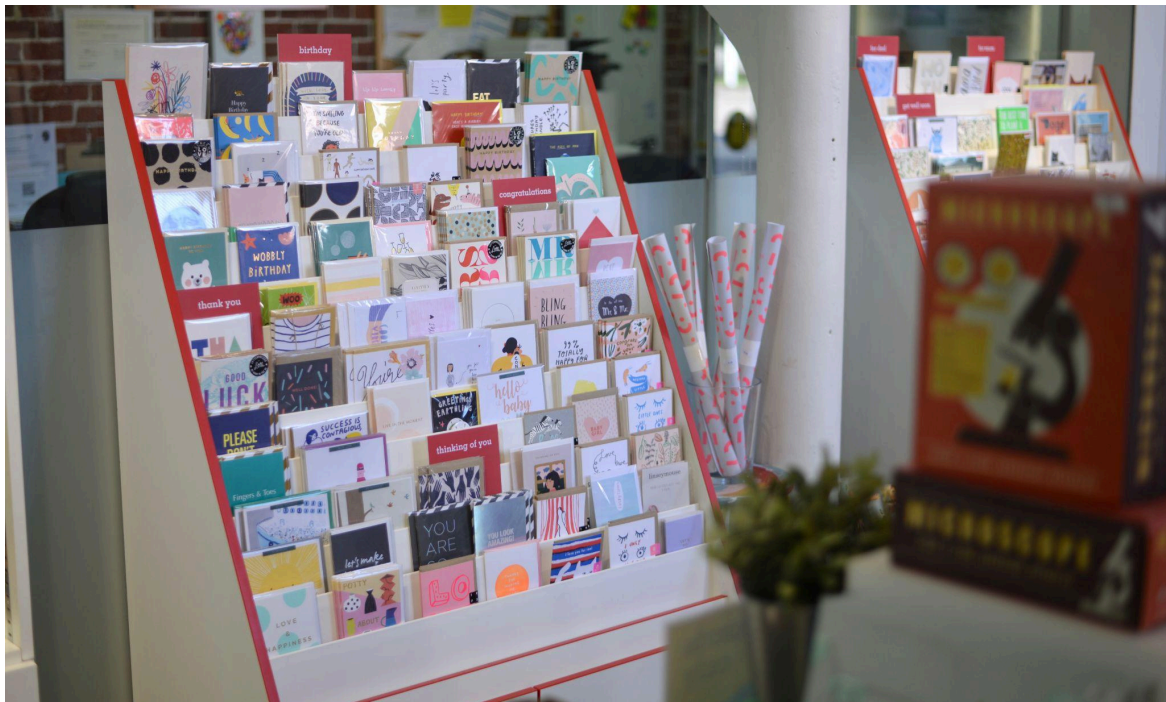
In the cafe area, there are tables and chairs and a soft seating area for cafe customers. You can only eat food that is bought in the café here.

It can be crowded and noisy sometimes. If you want to find a quieter place to sit, please ask a member of the staff.



There is also an outdoor patio area with tables and chairs. This is only open in spring/summer when the weather is good. This area has cobblestone paving and may be slightly unsteady.

Visiting the Aspex shop



There is a shop which sells books, prints and gifts. The shop is outside the artist studio and staff office.

If you want to buy something you can take it to the reception desk. A member of staff will put it through the till and take payment. You can pay in cash or by card or contactless.

If the fire alarm goes off

In the event of an evacuation, a loud alarm will sound. Staff will ask you to exit the gallery via the nearest door and wait outside.

They will direct you to a safe space and let you know when it is safe to go back inside the building.

Leaving Aspex Portsmouth



When you are ready to leave, you can exit through the door you used to enter the building.

We hope you enjoy your visit.

If you need to contact us

You can find out more about Aspex Portsmouth at our website here aspex.org.uk

If you would like to familiarise yourself with the building layout before visiting, you can view our virtual in-gallery tour on our website here aspex.org.uk/visit/accessibility

If you have any questions or want to talk to a member of staff before your visit, you can contact us by calling +44 (0)23 9277 8080 or emailing us at info@aspex.org.uk